



# GARDEN BUZZZZZ



Volume 27 Issue 12    Central Alabama Master Gardener Association    December 2018



## Message from: Rhona Watson



The trees are finally in full fall color, the bright red of the 20 year old Red Dragon, and 15 year old Osakazuki, the gold of the Coral Bark and Beni Kawa, and the orange Chinese Pistache. These are not the only trees turning, but they are by far the most striking because they have been in the ground and have awesome shapes after years of growing and pruning.

The greenhouse is full of the tropical plants for the winter, and lots of cuttings for next year's landscape and containers. There are several plants such as the Mexican heather and begonias that I just let die after the first frost and do cuttings for the next season. There are only two that I actually dig up and

replant the abutilon, the common name is flowering maple, and snow on the mountain that I love and are difficult to find.

I have been busy raking leaves for the compost bin, and using some to create a new area for the apple trees I bought last spring. I also have a new toy a small electric chipper that makes cleanup of small limbs easier, and great material for compost or mulch. When the hard work is done I browse thru my seed catalog that just arrived to plan for next year.

I am very proud of being your president for the last three years and what we accomplished. I was fortunate work with great officers. Sandy Rosamond the vice president, did an outstanding job getting us speakers for each meeting, organizing outings, and leading our creative crafts for the plant sale.

Bill Quails the treasurer is always there and ready with the checkbook and monthly reports. He can be depended on to help whether it is setting up the room, or helping build benches.

Mary Lou Mullins the secretary gave us good insight at our board meetings and did an accurate precise job of keeping the minuetts at our monthly meetings.

Rhonda Miles our advisory council Rep kept us up to date on what was going on at the State level. We could not have accomplished nearly as much without the support and guidance of Mallory Kelly our Extension Agent and friend.



## Table of Contents:

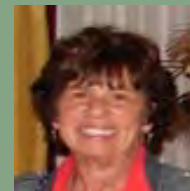
Message from Rhona.....	1-2
Home for Christmas.....	3
Message from Mallory...	4
CAMGA Minutes .....	5-6
Stubborn Old Gardeners	7-8
Lunch & Learn.....	9-10
Projects Committee Minutes.....	11
Mansion Report .....	12-13
Spotlight on Volunteers...	14
Learning Garden Workday .....	15
Library Report.....	16
2019 CAMGA Membership Form.....	17
2019 Lunch & Learn Schedule.....	18
December Calendar .....	19

CAMGA Garden Buzzzz  
Carol Pugh — Editor  
pughdia@aces.edu  
334-567-6301





## Message from: Rhona Watson CAMGA President — (Continued)



Thank you everyone for your support and hard work, especially the committee chairs. The progress we have made in each area is due to their initiative and willingness to try new things.

Mary McCroan has made our learning gardens a show place that impressed even Jason Powell. Candy Jones has made our Advanced Master Gardener Program an example for the entire state. Sandi Adkison, Charlotte Hall, and Cathy Whigham have brought us great Lunch and Learn Programs. Mary Ann Hatcher organizes and runs the help-line with amazing efficiency. Robin Snyder makes and organizes all the food, decorations and logistics of all our meetings and the Christmas Party which gets better each year. Robin and Lee Ann Marona also did an exceptional job with the Intern Class. Sherri Schaefer with the help of Carol Rattan organized us, and all our plants and crafts for the plant sale our biggest fund raiser of the year. Terri Chambliss and Jane Mobley are a great team organizing the projects committee which is our face to the public and some fun projects like building the benches. Gale Leonard-Wheeler sends out cards to members and spouses. Cathy Whigham devised a new membership form to help with the accuracy of the directory, and works tirelessly to get it all together by January. Anida Wishnietsky keeps up with all of our social media presence, keeps the dues tracker up to date, and does an awesome job with communication and email to the membership. Judy May makes sure all our volunteers are getting recognition for their accomplishments and work. Carol Pugh puts together our informative and attractive newsletter each month. Jane Mobley records all of us and what we accomplish and makes a wonderful book for us each year.

It is a pleasure to work with so many motivated, and creative people. I have learned a lot and am looking forward to continue working with the new board next year. I am excited about the incoming officers and what they will bring to our organization. Most of the committee chairs have stayed on to support them but Lee Ann Marona will be taking over the awards program, and Dee Tuberville will be taking over the Library. The new program of giving awards monthly for the most hours and accomplishments is an example of the creative things to come in the upcoming year. More details will be coming soon but be sure to get in all

your hours for 2018 in by January 1<sup>st</sup>, and next year put them in monthly.

I hope to see everyone at our Christmas Party on December 4<sup>th</sup> to socialize, and celebrate all of our achievements in 2018. I wish you and your family a happy Holiday Season!



The last picture is an Orangeola Japanese Maple in a large container. The Orangeola is known for its remarkable leaf color in the spring and fall. The leaf color is best if grown in partial shade. It is perfect to grow in a container because it is not that wide spreading and grows only from 4 to 8 feet in height, and will stay smaller when grown in a container.

***YOUR FAVORITE GARDEN SHOULD  
BE YOUR OWN  
Rhona***

## *Home for Christmas*

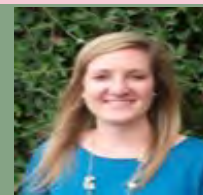


*Please join  
CAMGA for the 2018 Christmas Luncheon  
Tuesday December 4 at 10:00 AM  
First Presbyterian Church  
100 West Bridge Street  
Wetumpka, AL*

*We will have a short business meeting and follow with lunch and holiday fellowship. This meeting will replace the normal 3<sup>rd</sup> Tuesday monthly meeting. Remember that parking is available on both sides of the church. Please RSVP to Robin at [jmsrgs@gmail.com](mailto:jmsrgs@gmail.com) or [334-549-3921](tel:334-549-3921). CAMGA will be providing hearty meat appetizers and you are asked to sign up to provide the additional foods and drinks.*



**Message from Mallory**  
**Mallory Kelley**  
**Regional Extension Agent — Home Grounds, Gardens, Home Pests**



## Selecting, Planting and Caring For Shrubs

Shrubs are great additions to any landscape. There are a variety of colors, shapes, textures and mature heights to accommodate any design need. Planting a variety of shrubs that bloom at different times of the year and add year-round color to a landscape.

**Choosing a Shrub** -- Choose a shrub that will grow to its full potential in a particular area's soil and light conditions. Always choose shrubs that are suitable in the area where they will be planted. Make sure the plant has a suitable mature height and the correct soil and light requirements for the area you want to plant it.

Underestimating mature plant size is an all too common mistake. Planting shrubs too close to a house or other plants can cause unneeded maintenance issues. To narrow down shrub options, decide whether the shrub needs to be an evergreen or deciduous shrub. Also make sure the shrub is suitable to the USDA climate zone it will be planted.

Avoid planting insect and disease prone shrubs. Always select plants that have fewer insect and disease problems to make your landscape maintenance easier. Choosing the right plant is the best way to start.

**Planting Shrubs** -- Fall and winter are the best seasons for planting shrubs. Once soil moisture increases, typically in mid-November, people can plant shrubs through February. Planting shrubs in fall and winter allows root systems to become established before the hot, dry summer.

There are a few tips for planting shrubs. When planting, space the plants to their mature size to allow for maximum growth. When digging a hole, a good rule of thumb is dig the hole twice as wide and no deeper than the pot the plant is in. If you cover up the main trunk, you will kill the plant. Mulching the plant is always a good idea to conserve moisture and suppress weeds and the plant may need to be staked to prevent it from blowing over.

**Caring for Shrubs** -- There are some shrub options that are low maintenance. Many of our native plants are really tough and underutilized. Some great native shrubs to plant are yaupon holly, wax myrtle and the rare fothergilla, which have interesting flowers. Camellias are great for winter bloom. In Alabama, they can bloom from September through April.

Every person's environment is different. Just because a plant is easy to care for doesn't mean that it can grow in your area. This is why knowing the suitable conditions for the plant is important.

Reduce stress on plants by planting the right plant in the right place. Also, mulching and keeping the plant watered will reduce stress. A healthy plant is less susceptible to pests. Taking a soil sample to know what nutrients are lacking or in surplus and also if pH needs to be adjusted.

**Source: Mallory Kelley and Hayes Jackson, ACES Regional Extension Agents**

**Image: Yarygin/shutterstock.com**



## CAMGA Minutes November 2018 By: Mary Lou Mullins, Secretary

**Welcome** Rhona Watson (President) called the meeting to order. Attendance for the day was forty-two. She introduced our speaker, Lee Borden, one of our fellow CAMGA members.

**Program** Lee presented “When Plants Talk”, a detailed power-point discussion about what happens below the soil’s surface. Referencing the 1973 book, The Secret Life of Plants, Lee highlighted the sharing of resources that happens within the forest floor, and the amazing part the fugal network plays.

### **Business Meeting & Committee Reports**

Rhona announced that the next meeting will be the annual Christmas Party and Installation of Officers on December 4th at 10 a.m. at the Fellowship Hall of First Presbyterian Church, Wetumpka located at 100 West Bridge St. (Parking is available on both sides of the building.) Rhona passed around a sign-up sheet of items needed for the party. Board members are asked to arrive by 9:30 a.m.

The Nominating Committee presented the following roster of CAMGA Officers for 2019:

Sandy Rosamond- President  
Lynda Edwards- Vice President  
Deann Stone- Secretary  
Bill Quails- Treasurer

**MOTION:** The above list of officers was approved by acclamation.

(State Advisory Council Representative Nominee will be announced at the Dec. meeting.) The October Meeting Minutes were approved by acclamation.

Bill Quails, Treasurer, gave the following report. At the end of September, the balance was \$8,722.96. Funds received during the month were \$396. Expenditures were \$724.43. This leaves a balance of \$8,394.53. This report was approved by acclamation.

Rhona reminded everyone that dues **must** be in by December 4. Make checks payable to CAMGA. (\$20 for state and local, \$12 local only.) Membership forms are available. If a hard copy of the directory is desired then it must be checked on the form. Those paying after this date will not be included in the 2019 CAMGA Directory.

Mary McCroan has been updating the list of deceased members. **MOTION:** Mary (Amanda Borden seconded) moved that a list of deceased members be included in the directory using the best current information and that it be updated annually. Approved

Mary McCroan (Learning Gardens) announced that there will be a work day on November 29, weather permitting, from 10:00 - 2:00 with a break at lunch. Proposed projects for this day include:

Patio by water garden currently holds two chairs, just barely. We would like to enlarge the patio, which would require moving some plants and adding more stone. Garden fence, looking from kitchen, is falling down. We propose to remove rotting fence and add another raised bed. We would get some additional dirt that members could access for personal repotting. We currently have five above ground faucets and would like to move more underground and cap some so we could keep water running during winter.

Entrance to Extension Office is a little messy. Remove current plants and install EDPM cloth to create an 8x8 area and cover with mulch. This would keep the entrance a little cleaner.



# **CAMGA Minutes**

## **November 2018**

**By: Mary Lou Mullins, Secretary**



Terry Chambliss (Projects Committee), reminded members to come on Nov. 29 for the work day and to look forward to Jan. 11, 10 a.m. to noon for a Floral Creations Fun Project with Charlotte Hall in the Extension Auditorium.

Rhona announced that most of the committee chair person positions have been filled. They are as follows:

Projects: Terry Chambliss and Jane Mobley  
Community Learning Gardens: Mary McCroan  
Lunch and Learn: Charlotte Hall, Sandy Adkinson, and Cathy Whigham  
Internship Class: Lee Ann Marona and Robin Snyder  
Fund Raising: Sherri Schaefer and Carol Rattan  
Advanced Master Gardener: Candy Jones  
Directory: Cathy Whigham  
Newsletter: Carol Pugh  
Helpline: Mary Ann Hatcher  
Hospitality: Robin Snyder  
Library: Dee Turberville  
Membership Care: Rhonda Miles  
Reach for the Stars: Lee Ann Marona  
Historian: Jane Mobley  
Network: Anida Wishnietsky  
Volunteer Spotlight: Judy May

Rhona encouraged everyone to turn in volunteer hours at least monthly. The Reach for the Stars Program will begin recognizing the master gardener who has strived for excellence that month with an award pin. \$107 was approved at the Board Meeting to purchase these pins. (Motion by Terri Chambliss/seconded Lee Ann Marona.)

Rhona announced that all Advanced Master Gardeners are a part of the Speakers' Bureau. Anyone else who would like to be added to this list should contact her. It was announced that all future Lunch and Learns will be held on the second Tuesday of the month in the Fellowship Hall of First Presbyterian Church rather than the Extension Office Auditorium. This will allow more space for this popular program. The next class will be Floriculture with Charlotte Hall.

Linda Edwards (2019 Vice Pres.) said she had the programs arranged for next year except for one month. She requested that members offer their personal lawns and gardens for a local garden tour for a special CAMGA field trip. This has been a success in the past. Next year is Elmore County's year for hosting the Master Gardener Internship Class. Please start now "talking it up" so we can have a full class. The January CAMGA Meeting will be Jan. 15 at 10AM at the Extension Auditorium with Kenneth Rogers speaking from the Camellia Society.

There was no further business. Rhona adjourned the meeting.

***Respectfully submitted,  
Mary Lou Mullins, Secretary***



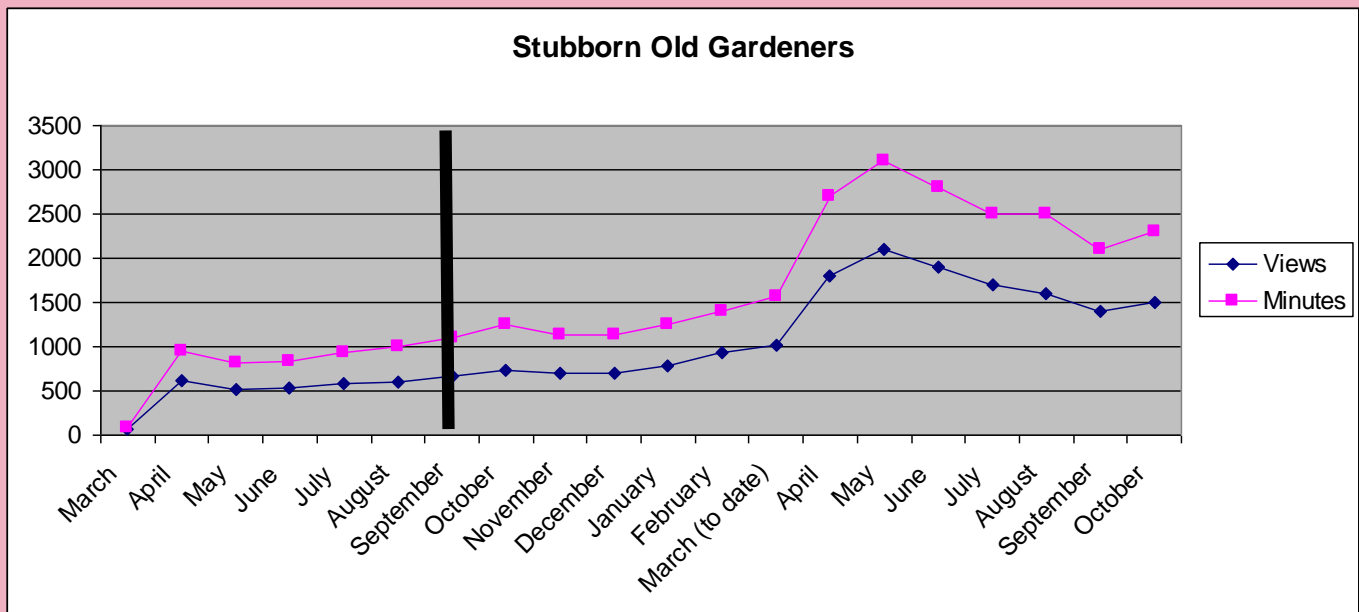
## Stubborn Old Gardeners

By: Lee Borden

I'm going to apologize to you. And then I'm going to share some good news. No, some *great* news.

I apologize to you for neglecting our YouTube page, *Stubborn Old Gardeners*. The last video we posted was more than a year ago: Iva Haynie's two-minute tutorial on fun and inexpensive ways to attract birds to your garden, which posted September 20, 2017. I have no excuse; I've simply failed to give *Stubborn Old Gardeners* the attention it deserves.

The great news is what has happened while I've been neglectful. This chart shows our monthly performance data since we began posting videos in March, 2017. And the big black vertical bar marks when we stopped posting videos a year ago. Can you see what has happened? The videos that were already posted found more and more viewers over time. So now, months after their work is finished on them, the video Jane Mobley did on sharpening pruners has been watched 900 times. My video on protecting a Meyer lemon tree has 2,100 views. Mary McCroan's video on perennial sorrel has more than 3,100 views. Judy May's two videos on orchids have a combined viewership of more than 6,700. And Amanda Borden's two hydrangea videos have more than 8,700 views.



And all those views happened while Amanda and I were focused on our cancers and Amanda's Mom's death, and while Mary McCroan was taking care of her Dad. We didn't have to do anything. It just happened.

## Stubborn Old Gardeners (Continued)

By: Lee Borden



There's a natural seasonality, of course, so our views declined as cold weather arrived in the US, and I would expect them to surge again in the spring. But the overall trend line is decidedly positive even though we've posted nothing new for more than a year. That tells me two things:

1. There's a growing audience out there eager to learn what we know and are prepared to teach.
  2. We are missing a powerful opportunity to leverage our skills and our YouTube channel and have even more of an impact, but it's an easy problem to fix.
- So you know what comes next, don't you? It's time for you to step up and tell me what video you want to produce for *Stubborn Old Gardeners*. Start with [8 Steps, 8 Hours To Your Finished Video](#) and go from there.

And because I know you're unlikely to step forward and suggest your own video, I want to ask you to become a Stubborn Old Tattletale and tell on your friends. Here's all you need to do: e-mail me at: [leeborden@gmail.com](mailto:leeborden@gmail.com) and tell me of someone you know in CAMGA who has expertise to share in a *Stubborn Old Gardeners* video. I'll take it from there and reach out to the person you've named. I'll even keep your name out of it if that's what you want.

Let's get going. This is too good an opportunity to keep passing up.





## Lunch and Learn November 2018 By: Charlotte Hall

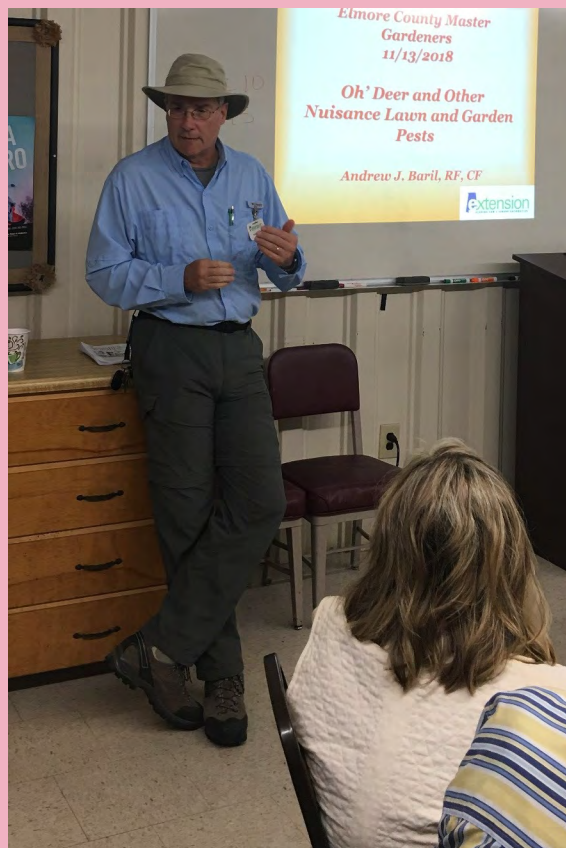
### “Garden Varmints – Andy Baril”

Well, I never knew that talking about Garden Varmints could be so much fun!!! Last month, we learned things we probably never did know about these critters. And to have it be presented by Andy Baril in such an entertaining way was a big plus!! If you were not there, you really missed a good one. The slides were phenomenal of the critters and the wording was just perfect - large enough to see for some of us older folks who do not have perfect vision anymore. And Andy's animation was hilarious! All in all, it was just a great presentation.

Andy, who is a regional extension agent, said he was just an old forester and his claim to fame is that he has worked in every county in the state of Alabama except Colbert. And he hopes to do that one day!

In talking about garden varmints, Andy reminded us that everything green is food for somebody or something. With that in mind, he urged us all to think about just how much or how little control we could tolerate because it is impossible to control one hundred percent of garden varmints. So, before you extend yourself in trying for total control, everyone should determine how much loss or damage to your plants would be acceptable. Critters have to eat, too, and every animal has some purpose in the creation process even if it is only food for another animal.

Garden varmints fall into the categories of insectivores, rodents and other mammals. Each respond to different control measures. Moles can do damage by tunneling and making burrows underground and disturbing or eating the roots of plants. Mole control is done with specific traps, but mold damage can be done by simply walking over the tunnels and pushing the soil back into place. Sometimes, while you are walking over the tunnels, you will step on the tiny mole and eliminate it, also. Before you think that you want to eliminate the moles totally, remember that they are truly carnivorous and eat a lot of harmful insects and grubs which may cause more damage than the moles. Often one may not want to control a particular animal which is considered a garden pest because of the good they actually do.



**Andy Baril, Regional Extension Agent presented “Garden Varmints” at the November Lunch and Learn Program.**

# **Lunch and Learn**

## **November 2018**

### **By: Charlotte Hall (Continued)**



Rodents such as chipmunks, squirrels, moles, pocket gophers and woodchucks may also be considered garden varmints. Chipmunks eat grains, nuts, berries, seeds, mushrooms, insects and carrion. They are very territorial and usually, in this area, there are no more than 4 to 6 chipmunks per acre. Their dens have small two-inch openings, usually next to structures, and have openings a minimum of fifty feet apart. Suggested control is an Old Victor type rat trap.

Translocation of animals usually does not help to save the animal. Each animal must learn to adapt to its new location which is fairly hard for the critter to do. Usually before it can re-learn and adapt to its new environment, it is eaten by predators.

Squirrels eat hard mass items such as acorns, nuts, and pine cones. In this area, we have grey, fox and flying squirrels. Their dens are nests in trees and also tree hollows. Control for squirrels is usually done with a 22, 410 or pellet rifle.

Rabbits are similar to squirrels in that they do the same things as squirrels but only at night. They are night prowlers. Voles or meadow mice make depressed travel lanes in turfs and like tall natural grasses. They become a nuisance when they number more than 300 per acre. Habitat control is recommended which means you need to keep your turf cut short, especially around flower beds or other places you want to control. Heavy mulch is also recommended – two inches is better than six inches of mulch. Six inches of mulch just creates a haven for rodents.

Other mammals such as armadillos can also be a problem. Ninety percent of their diet consists of insects and insect larvae. They feed on grubs, earthworms, spiders, scorpions and other invertebrates. An armadillo is unique in that the mother armadillo has exactly four babies every time and they are always of the same sex. The single egg always splits into four. Armadillos do most of their damage in the fall. A trap is recommended control, baited with a hanging banana.

Deer, identified by one master gardener as “rats on hooves,” have multi-chambered stomachs like cows. The best control is exclusion – figuring a way to keep them away from your crops and plants. Double fencing of a four-foot tall and a six-foot tall fence is best – one to two feet apart. Salt licks located away from the property may be beneficial. Black horticulture fencing can be used and is barely visible from a distance.

Wild or feral pigs do the most damage of all the garden varmints. Wild pigs are the only animals in the state of Alabama that cannot be moved out of the trap alive.

Next month on the 2<sup>nd</sup> Tuesday, December 11<sup>th</sup> at noon, a program on Floriculture will be presented. This should be a real treat since I am the presenter and I’m not exactly sure what Floriculture is! I think it is about creating items from natural materials or using plants for ornamental purposes – which is what I’m banking on it being!! However, I’m checking with Webster’s before then. Drinks will be provided. Hope to see you then as we wrap up our 2018 programs.



## **Minutes from Projects Committee Meeting November 2018**

**By:  
Terry Chambliss**

Those present were Sandy Rosamond, Rhona Watson, Candy Jones, John Butler, Johan Beumer, Judy May, Bill Quails, Jane Mobley and Terry Chambliss.

The recent plant swap was discussed. The committee was pleased with attendance but concerned there were not more interns. Next year it will be stressed that attendance does not require one to bring a plant, they just wouldn't get first pick. The propagation presentation was well received. There were not that many pots as there was some confusion about how they counted in the swap.

Four master gardeners volunteered for the recent work day at the Outdoor Classroom. It was agreed the work day in March should include the children.

It was reported twelve volunteers signed up for the Learning Gardens Workday scheduled for November 29. Since there are three major projects to be done that day, a request for more volunteers will be made at the next meeting.

The floral arranging class with Charlotte Hall was scheduled for January 11, 2019 from 10-12:00. The \$5.00 charge will cover the floral foam and fresh flowers. The participants are to bring a good size vase and greenery,

The Governor's Mansion work Day was scheduled for February 25, 2019 from 9-12:00 with a rain date of March 4.

It was decided to give recognition to volunteers on a monthly basis in the newsletter and with lapel pin starting in January. Judy May shared she is part of RSVP, a Retired Senior Volunteer Program that recognizes all volunteers in Elmore County. She will see if she can get a representative of the program to speak at the January meeting.

***Respectfully submitted,***

***Terry Chambliss***





## **Governor's Mansion Report November 2018 By: Amanda Borden**



During November, volunteers at the Governor's Mansion trimmed and weeded in the Herb Garden, weeded the rolling gate bed on both sides of the gate, and planted an oak leaf hydrangea. They weeded the Finley/Perry corner bed and planted recycled day lily and Louisiana iris. They planted two recycled wax myrtles on the inside of the south wall in the parking lot, a plumbago in the pool bed, and a beautyberry in the guest house bed. Following the freeze, they trimmed back frost-damaged plants: Kava, celosia, etc. in the Herb Garden and lantana in the side lawn and adjacent to the driveway.



**Removing celosia  
(Dian Owens, and Anne Carr)**

**Cutting back frost-damaged lantana  
before— (Dian Owens, Jane McCarthy,  
Anne Carr, and Linda Cater)**







## **Governor's Mansion Report (Continued) November 2018 By: Amanda Borden**



**Lantana Bed - After Pruning**



**Removing lantana by the driveway  
(Mirenda Tatum, Linda Cater)**



## **SPOTLIGHT ON VOLUNTEERS**

**November 2018**

**By: Judy May**

Attending the Projects Committee meeting Tuesday, November 13 were Terry Chambliss, Sandy Rosamond, Jane Mobley, Rhona Watson, Candy Jones, Judy May, John Butler, Johan Beumer, and Bill Quailes.

The Lunch and Learn Program November 13 was Garden Varmints by Wildlife expert Andy Baril. There were 25 attendees, 24 of them Master Gardeners. Assisting were Charlotte Hall, Sandi Adkison, Cathy Whigham and Bill Quailes.

Lee Borden presented “When Plants Talk” to CAMGA’s monthly meeting on November 20.

Members who brought refreshments to the November meeting were Mary Ann Hatcher, Linda Mincey, Robin Snyder, Connie Willis and Cheryl Fitzgerald.

Members who worked at the Governor’s Mansion were Amanda Borden, Linda Cater, Ann Carr, Mirenda and Lanell Tatam, Kathy Quinn, and Jane McCarthy.

On November 5, Projects Committee members Terry Chambliss, Lee Ann Marona, Candy Jones and Jane Mobley pruned at the Wetumpka Middle School garden.

Members of the Advanced Master Gardener Committee, Mary McCroan, Rhona Watson and Liaison Candy Jones held a meeting November 15 to hear a presentation from candidate Judy May and review her final application to the Program.

This month the volunteers at Lanark were Carla McCune, Leslie Bingham, Sheila Pearson, Dee Turberville, and Sue Brasel. Maria thanks you for all the hard work. She says she will be moving spider lilies and collecting plants from the woods if anyone wants to help. Call Maria at 657-9414. Regular work days are Wednesday 8 am until 11ish, but she has folks coming other days of the week. Please call Maria to let her know you want to help.





## Learning Garden Workday 29 Nov 2018

Our big event for November was a workday just one week after Thanksgiving. The weather cooperated with temperatures above 50, calm winds and no rain. We got three projects completed or nearly completed, the results are wonderful and we had a great time to boot. The best thing about Master Gardeners is the great people!



Our patio project involved doubling the size of the flagstone patio near the water feature. Our team for the patio was Ezell Grayson, Terry Chambliss, Cheryl Fitzgerald and Connie Willis. We expanded the seating from two chairs to at least four. Our first steps involved removing the existing flagstone and the plants that were in the



way of the expansion. Then we smoothed the area, tamped a bit, added some paver base, tamped a bit more, then the fun part--laying the flagstone. It was a group effort with the team members selecting the right shape and size stone for the right space. We still need to do a little leveling of the stones next week, but it already looks beautiful



The raised bed project resulted in a new double-height raised-bed to replace the Learning Garden fence section that was falling down. There was a lot of measuring, cutting and fastening going on. And the final result was perfect. Our team for the patio was Candy Jones, Amanda Borden, Virginia Pruitt and Linda Edwards.



The plumbing project relocated the above ground faucets to an underground box so that we can leave the irrigation system up and running most of the winter. Our crew for that project was Johan Beumer, John Barnes and John Butler.

After engineering a solution for each old faucet, the team cut pipe, glued

new parts together and created a frost proof system that we can use year around. Awesome!

And the last team member was me, Mary McCroan, who spent the day watching everybody else work and ordering pizza! Thanks to everybody for a job well done!



## CAMGA Library News

### 2018 CAMGA Library Acquisitions

### Ideas for Winter Reading and Garden Dreaming!

**By: Lee Ann Marona**

Title	Author
100 Plants to Feed the Bees	Xerces
Alabama Gardens Great and Small	Givhan
Alabama & Mississippi Garden Guide	Rushing
AHS Gardens Across America East of the Mississippi	Russell
Bonsai Workshop	Gustafson
Butterflies of Alabama	Ogard
Complete Guide to Saving Seeds	Gough
Complete Houseplant Survival Manual	Pleasant
Container Theme Gardens	Ondra
Dragonflies & Damselflies of Georgia and the Southeast	Beaton
Easy Container Combos: Vegetables & Flowers	Crawford
Easy Container Gardens	Crawford
Espalier Fruit Trees	Pieber
Ever-Blooming Flower Garden	Schneller
Fairy Garden Handbook	Walsh
Four Seasons of Bonsai	Murata
Grow a Little Fruit Tree...Small-Space, Easy Harvest	Ralph
Grumpy Gardener: An A to Z Guide from the Galaxy's Most Irritable Green Thumb	Bender
How Not to Kill Your Houseplant	Peerless
Miniature Gardens	Peters
Organic Gardener's Handbook of Natural Pest Control	Bradley
Proven Plants Southern Gardens	Glasener
Rescuing Eden: Preserving America's Historic Gardens	Seebohm
Slow Gardening: No-Stress Philosophy	Rushing
Small-Space Vegetable Gardens	Bellamy
Southern Garden Handbook	Marden
Stacy Lyn's Harvest Cookbook – April meeting speaker	Harris
Start a Community Food Garden	Joy
Visitor's Guide to American Gardens	Meyers
Weeds of the South - Helpline – Office Use Only	Bryson
Well-Tended Perennial Garden	DiSabato
Wicked Plants: The Weed that Killed Lincoln's Mother	Stewart
Your Guide to Forest Bathing: Experience the Healing	Clifford

**I'm excited to announce that Dee Turberville will be our new CAMGA Librarian! She is a retired corporate librarian and will carry on the work of curating our wonderful garden book collection.**



## Last Reminder for 2019 CAMGA Membership

### Central Alabama Master Gardener Association 2019 Membership Form

**Due: December 1, 2018\***

Please Print:

**Name** \_\_\_\_\_  
 \_\_\_\_\_ *Check if your information in the 2018 CAMGA Membership Directory is correct. If your information is correct, it is unnecessary to complete your profile information below.*  
 Address \_\_\_\_\_ City \_\_\_\_\_ Zip \_\_\_\_\_  
 Telephone \_\_\_\_\_ Cell Phone \_\_\_\_\_  
 Email \_\_\_\_\_  
 Year of your Master Gardener Class Graduation \_\_\_\_\_ County \_\_\_\_\_

**Type of Membership: (Check one)**

\_\_\_\_\_ Local and State Active Member - - - \$ 20

*(includes graduating interns)*

\_\_\_\_\_ Local only or Dual Member only - - - \$12

*(includes graduating interns)*

*(A dual member has primary membership in another county.)*

**Checks should be made payable to CAMGA.**

Amount Enclosed: Check \$ \_\_\_\_\_ Check Number \_\_\_\_\_ Cash \$ \_\_\_\_\_

\_\_\_\_\_ Yes, I am a dual member. County of primary membership \_\_\_\_\_

**Please mail or give this completed form and dues to Treasurer,**

Bill Quailes

1060 Redbud Road

Titus, AL 36080

**\*\*NEW\*\*** Would you like to receive a CAMGA Membership Directory Booklet as well as the digital version **or** only the digital directory? **Check one:**

\_\_\_\_\_ CAMGA Directory Booklet as well as the Digital Version

\_\_\_\_\_ Digital CAMGA Directory ONLY

**\*Your completed form and dues must be submitted by December 1, 2018 or you risk not being included in the 2019 CAMGA Membership Directory. If you wish to have a new picture in the directory, send to [cathywhigham@gmail.com](mailto:cathywhigham@gmail.com) by December 1.**

# Central Alabama Master Gardeners Association **Lunch & Learn 2018**

**2nd TUESDAY of EVERY Month**

**12:00-1:00 pm**

First Presbyterian Church

100 West Bridge Street, Wetumpka 36092



**BRING A SACK LUNCH**

**FREE PROGRAM**

**DRINKS PROVIDED**

- |                     |  |
|---------------------|--|
| <b>8 January</b>    | Seed Starting<br><i>Mallory Kelley, Horticulturist, ACES</i>   |
| <b>12 February</b>  | Growing Camellias<br><i>Dr. Charles Mitchell, Retired Professor, Auburn University</i>                         |
| <b>12 March</b>     | Hummingbirds<br><i>Fred Bassett, Licensed Bander</i>   |
| <b>9 April</b>      | Native Plants for Our Area<br><i>Peggy Thompson, Jefferson County Master Gardener</i>                          |
| <b>14 May</b>       | Effective Use of Plant Materials in the Landscape<br><i>Rip Weaver, Executive Director of Aldridge Gardens</i> |
| <b>11 June</b>      | Hello Hydrangeas<br><i>David Doggett, Jefferson County Master Gardeners</i>                                    |
| <b>9 July</b>       | Snake Identification<br><i>Mary McCroan, Advanced Master Gardener</i>  |
| <b>13 August</b>    | Unique Ideas to Gardening in Small Spaces<br><i>Glenn Huovinen, Advanced Master Gardener</i>                   |
| <b>10 September</b> | Controlling Pesky Weeds<br><i>Virginia Pruitt, Master Gardener</i>   |
| <b>8 October</b>    | Bugs In And Around the Home<br><i>Dani Carroll, Horticulturist, ACES</i>                                       |
| <b>12 November</b>  | Orchids<br><i>Charlotte Bent, Master Gardener</i>  |
| <b>10 December</b>  | Artistic Flower Pressing<br><i>Betty Plaster, Master Gardener</i>  |



For more information, please contact the  
Elmore County Extension Office (334) 567-6301  
[www.aces.edu/elmore](http://www.aces.edu/elmore)



# Calendar of Events

## December 2018

Sun

Mon

Tue

Wed

Thu

Fri

Sat

						1
2	3 Governor's Mansion Work Day 9 to 12 noon	4 Home For Christmas — CAMGA Christmas Luncheon at 10 a.m. First Presbyterian Church, Wetumpka	5 Lanark Workday 8 to 12 noon	6 Elmore Co. Ext. Office Learning Gardens Workday 8-12 noon	7	8
9	10 Governor's Mansion Work Day 9 to 12 noon	11	12 Lanark Workday 8 to 12 noon	13 Elmore Co. Ext. Office Learning Gardens Workday 8-12 noon	14	15
16	17 Governor's Mansion Work Day 9 to 12 noon	18	19 Lanark Workday 8 to 12 noon	20 Elmore Co. Ext. Office Learning Gardens Workday 8-12 noon	21	22
23	24	25 	26	27 Elmore Co. Ext. Office Learning Gardens Workday	28	29
30	31 Governor's Mansion Work Day 9 to 12		The Elmore County Extension Office will be closed December 20—January 2, 2019 and will reopen Thursday, January 3, 2019 at 8:00 a.m. Merry Christmas and a Happy New Year!!			