



GARDEN BUZZZZZ



Volume 27 Issue 5 Central Alabama Master Gardener Association

May 2018

Message from: Rhona Watson
CAMGA President



Table of Contents:

Message from Rhona.....1-2

Message from Mallory.....3-4

Learning Garden..... 5

Minutes 6-7

Projects Committee
Minutes..... 8

Lunch & Learn 9-10

Mansion Report 11

Spotlight on Volunteers... 12

Help Line Report 13

Upcoming Workshop..... 14

May Calendar 15



CAMGA Garden Buzzzz
Carol Pugh — Editor



pughdia@aces.edu
334-567-6301



May is a busy month in the garden and there are several learning opportunities scheduled for this month.

The roses are spectacular, the best in a couple years. The spirea is almost done, and the hydrangeas are going to bloom in the next few weeks.

The weeds are gone replaced by pine straw on top of newspaper. It is extra work now, but saves time in the heat of summer from pulling weeds.

I have about 60 plants for the plant sale including herbs, peppers, assorted perennials, succulents, and a few Japanese Maples. I am looking forward to clearing them out and making room for more.

If you are not busy enough in your yard in May, the State Conference is the 3rd thru the 5th. Karen Weber is speaking in Prattville on the 11th, and we will have our own garden tour on the 22nd.

The tour will include the garden of Mary McCroan, Freda Frye, and my house—home of lots and lots of Japanese Maples, containers, and Bonsai, along with other unusual plants.

Mary McCroan can always use help in our learning gardens every Thursday starting at 8. This is a great way to learn thru experience and get to know the members and interns.

Some of those unusual plants came from the Earth Day plant swap in Wetumpka. There are always a few gems there. Thank you to all the people who worked that day. It is fun talking to people, answering questions and of course THE PLANTS.

Stacy Lyn Harris did an informative and entertaining presentation on sustainable living at our April meeting. She is an amazing woman, mother of 7, chief cook and gardener, and still has time to write books and a blog.

Her book “Tips for Sustainable Living” is now in our Library, or you can buy it on Amazon.

Message from: Rhona Watson
CAMGA President — (Continued)



The Montgomery Botanical Gardens, are implementing their plan, with donated plants and trees from the community. They will start planting in April. If you are interested in helping contact Amanda Borden, who is on the board of directors.

The garden will represent all of the River Region, so our association is donating the shield ferns.

I hope you will come and see our gardens on the 22nd, you may get some good ideas for yours.

YOUR FAVORITE GARDEN SHOULD BE YOUR OWN
Rhona

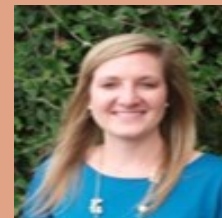


The container in the picture is done using the bonsai technique. There is a Japanese Maple that was grafted last year and a boxwood. Look close in the foreground and you will see an elephant getting a drink.

Message from Mallory

Mallory Kelley

Regional Extension Agent — Home Grounds, Gardens, Home Pests



Mulch for your Landscape

Mulch is a natural process that occurs regularly in nature with fallen leaves, twigs, and spent flowers. There are so many benefits to using mulch and they provide a protective covering for the soil and keep your garden and landscape healthy.

Mulches can be in the form of organic or inorganic. Organic mulches are made up of plant material and will decompose and become part of the soil. Organic mulches must be replenished periodically due to their rate of decomposition. Inorganic mulches are not composed of plant material and are often seen in the form of plastics or rock type formations.

Mulching helps the soil hold moisture and helps prevent weed seed germination. Mulches also help keep the soil cooler and when mulch decomposes it increases organic matter which helps with soil aeration and water absorption.

Organic mulches are less expensive and can be created through leaves and grass clippings that are already present in your landscape. Bark mulches or wood chips are made from different types of trees and are very attractive in the landscape. These mulches have a slow decomposition rate, but should not be used next to foundations as they can attract termites. Other types of organic mulches include, leaves from your trees, grass clipping, pine straw, and even old newspapers.

This year there has been lots of interest in using newspaper as a mulch in the landscape and in the vegetable garden as a weed barrier. This is a great idea as it also helps enrich the soil as the newspaper breaks down over time, but it also helps retain moisture. When using the newspaper use multiple sheets or even a whole section of the paper at a time (6-10 pages thick) for the best weed control especially throughout the summer months when weeds are most prevalent.

Inorganic mulches such as gravel, crushed stone, and plastics are more expensive, but are permanent additions to the landscape. They come in a variety of different colors, textures and materials. These inorganic mulches can add a great element to the landscape, but keep in mind that these types of mulches will be much warmer in the summer months removing more water from the soil and can scorch nearby plants. Plastics are good inorganic mulches, but can cause the soil to remain too wet resulting in root disease problems. Black plastic is not very durable and tends to break down quickly. It is often a good idea to cover plastic mulches with a thin layer of pine needles or wood chips to help slow down the decomposition of some plastics and also to help keep the plastic cooler in summer months.



Message from Mallory
Continued — Mallory Kelley
Regional Extension Agent — Home Grounds, Gardens, Home Pests

Tips to most efficiently use mulch in your landscape:

- Always remove existing weeds before applying mulch.
- If applying mulch in the fall, wait until the soil has cooled before applying as this can encourage weed seed germination.
- Keep mulch depth uniform throughout your planting beds and around trees (2-4 inches for organic and 1-2 inches for inorganic mulches).
- Never let mulch build up around the trunk of trees or shrubs. After a few years of mulch application if you see this buildup occurring rake away old mulch and apply a new layer.
- If the mulch starts to smell like vinegar, ammonia, sulfur, or silage the mulch has gone bad. The smell is unpleasant in the landscape and can damage your plants. To cure this problem in your landscape turn the mulch once or twice a month- Good aeration should eliminate the problem quickly.



For more information on mulches for your landscape or garden please visit one of the following sites:

<http://edis.ifas.ufl.edu/MG251>

<http://www.aces.edu/pubs/docs/A/ANR-0385/>



Learning Gardens Report

By: Mary McCroan

In the last month we've been busy as our fine spring weather has encouraged outside activities.

The Kitchen Herb Bed redo is well underway under Candy's direction with many yards of new dirt added and plants soon to follow.

Caroline and Bill built a new raised bed with a vertical element for experimenting with maximizing grow space in the up direction.

We opened up the water feature and it sounds and looks great. It was time to see how the French Sorrel stands up to division.

And Amanda is planting the part of the garden not in vertical beds. This year it will be a curbit garden. Think squash, melons, pumpkins, etc.

And last, but certainly not least, Jane has been busy planning and planting in the Butterfly Garden.

It is already looking wonderful!



CAMGA Minutes

April 2018

By: Mary Lou Mullins, Secretary

Welcome: Rhona Watson (President), welcomed the 43 members and seven interns present. Rhona extended thanks to Candy Jones and other members who are contacting absent members to let them know they are missed.

Monthly Program: Sandy Rosamond, (Vice President and Programs Chairman), introduced our speaker, Stacey Lee Harris who spoke on “Sustainable Living” and “Sourcing & Preparing Meals.” She referenced her blog Game & Garden.com as she enthusiastically shared a power point presentation covering two decades of experiences.

Business Meeting & Committee Reports:

Rhona opened the meeting requesting approval of the March CAMGA Minutes. Bill Quailes (Treasurer), stated an income of \$44 and an expenditure of \$65.45 for March leaving a balance of \$7,987.65. Both reports were approved.

Robin Snyder (Hospitality Committee), requested individuals continue to sign up to bring monthly refreshments and expressed thanks to those who have already shared them.

Mary Ann Hatcher (Help Line), reported that the schedule for the Help Line was nearly full with only two spots left. She also presented two items that have been donated to CAMGA, a Plant Cam by Betty Stricker and a “Lil’ Digger” planter by Ann Smith and her husband.

Jane Mobley (Projects Committee), extended her appreciation to everyone who assisted at Lanark recently. She reminded the group of The Earth Day Plant Swap requesting individuals bring plants and assist at the Elmore County Courthouse from 10AM-2PM, April 22.

Charlotte Hall (Lunch and Learn Committee), requested information concerning a microphone that could be used for classes when necessary. It is believed that CAMGA has one in storage and it will be sought.

Sandy Rosamond reviewed the up-coming programs. Next month’s will feature Mark Waldo presenting “An Introduction to Bonsai” on May 15. A week later on May 22, CAMGA members are invited for a tour of gardens of three members, Mary McCroan, Rhona Watson, and Freda Frye, with lunch to follow at a local restaurant. More precise details will be given at the May meeting

CAMGA Minutes (Continued)

April 2018

By: Mary Lou Mullins, Secretary



Rhona asked Sherri Schaefer (Plant Sale Chairman), to discuss what preparations were still needed for the Plant Sale Saturday, April 28th. Sherri asked that everyone who had signed up for the various work times on Thursday, Friday and Saturday come as promised and make sure any items that are loaned for use are labeled clearly with their name. Emails will go out early in the week to give more specific information.

Rhona explained that CAMGA in the past has given a \$1000 donation to Auburn University School of Agriculture for scholarship. She asked if the group would like to do this again. **MOTION:** Nancy Tribble (Amanda Borden seconded), moved that \$1000 be given to Auburn for student scholarship in the School of Agriculture. This was approved.

Rhona asked Amanda Borden, who serves on the board for the Montgomery Botanical Gardens at Oak Park, discuss the request made by that group for plant donations. Amanda explained the desired up-coming planting needs. **MOTION:** Bonnie McCormick, (Janet Lewis seconded), moved that CAMGA give \$300 to the Botanical Gardens for the purchase and planting of Southern Shield Ferns. This was approved. Carol Rattan asked that all members take home and review a copy of the quarterly publication of "Green Prints." She encouraged subscribing.

Rhona adjourned the meeting saying she looked forward to seeing everyone at the Plant Sale!

Respectfully Submitted,
Mary Lou Mullins, Secretary



Mrs. Stacey Lee Harris presented a program on "Sustainable Living" and "Sourcing & Preparing Meals" at the April CAMGA meeting



Minutes from Projects Committee Meeting April 2018

Those present were Mallory Kelly, Rhona Watson, Sandy Rosamond, Candy Jones, Johan Beumer, Judy May, Janet Lewis, Jane Mobley and Terry Chambliss.

The Plant and Pollinator Festival on April 14, was discussed. The committee approved the business card with contact information about ACES and the Master Gardener program created by Candy Jones to be handed out at the festival, plant swap and plant sale.

Mallory Kelly gathered some publications, bookmarks, Lunch & Learn flyers, and stickers for the table. Johan Beumer, Janet Lewis, Jane Mobley, Sandy Rosamond, Robin Snyder, Virginia Pruitt, Pat Petro-Perryman, Connie Willis and Terry Chambliss volunteered to man the table in two-hour shifts.

Items to be taken include the tent, table cloths, gold table banner, balloons, publications, soil test kits, applications, pens, rocks for weights, soil, cups with lids, zinnia seeds, watering can, wet wipes, plastic bags, business cards, display frame for one page information sheet and a plant.

Earth Day on April 21, was discussed and plant identification books set aside. Project members Judy May, Nancy Tribble, Candy Jones, Rhona Watson, John Barnes, Jane Mobley and Terry Chambliss volunteered to man the table in two-hour shifts. The sign up sheet will be circulated at the next CAMGA meeting on April 17, for additional volunteers.

Jane Mobley reported taking measurements with Mary McCroan and Terry Chambliss at the hospital for their beautification project. The courtyard measured 138'X78'. Jane expressed disappointment about the pruning that was done between visits even after providing some education on the subject. The hospital administrator assured however, the long time groundskeeper would be amenable to learning how to prune properly.

Rhona Watson received a letter inviting CAMGA to participate with a booth at the Fall Flower Show at the State Fair. She will bring it up at the next meeting.

Respectfully submitted,

Terry Chambliss



April 2018 Lunch & Learn

By: Charlotte Hall

For our April Lunch and Learn program, Shirley Fifield introduced us to some of Alabama's unique wildflowers through a series of colorful slides from photos she had personally made on many wildflower excursions.

Though originally not from this area, Shirley became enthralled with the wildflowers in the South and helped launch the Alabama Wildflower Association in which she held many offices, including vice-president and president. After listening to her presentation, it was easy to understand why she held these positions. Her love of the many native wildflowers was much evident and her ability to recall the scientific botanical names of so many wildflower varieties was unbelievable.

Shirley recommended many areas where wildflowers are in abundance in Alabama with the Conecuh National Forest as being one of them. Here there are many tall grasses, carnivorous plants such as the pitcher plant, rose orchids, native water lilies, fraligis, wild crinum and tiny iris. Her photos of these native wildflowers were outstanding. The tiny iris was most unique as it resembled a pinecone with a flower on it. It is also unique in that it has one bloom a day and then the bloom is gone.

The slides that Shirley shared were magnificent photos of native wildflowers from all over the state as Shirley has been on many expeditions to locate different wildflowers and also specific ones native to a certain area. She mentioned the Black Belt area of Alabama where the title Black Belt would conjure up thoughts of rich, black soil. In actuality, this is not necessarily so since the land in the Black Belt contains few nutrients because farmers planted cotton so heavily there and the cotton depleted the soil nutrients. But the orchid spiranthes, along with other wildflower varieties, is found here. This orchid is tall with white blooms up a stalk.

Alabama has an abundance of areas that produces many rare and unusual wildflowers found only in these regions. In addition to many national forest areas, Alabama is home to bog areas, mountainous areas, coastline areas, and many unique rivers and streams. There is a natural habitat in Bibb County where flowers are growing in water. The Cahaba lilies in the Cahaba River are another example of unique wildflowers. Shirley also noted that if you see a grove of cedar trees anywhere, you will automatically know that the area is heavy in lime or calcium.

Among the many varieties of wildflowers found in Alabama are the following – given in common names as I could not write fast enough the correct botanical name that Shirley quoted – butterfly weed, shooting star, echinacea or coneflower, rudbeckia bicolor, oakleaf hydrangea, Alabama canebrake pitcher plant (found only in Alabama), cahaba lilies, violets, Cahaba prairie-clover, trillium, ginger, Alabama war bonnet, Cahaba Indian paintbrush, Turk's cap mallow, purple mist flower, and lady slippers.

Shirley worked diligently for over three years and finally succeeded in getting the oakleaf hydrangea declared the State of Alabama's state wildflower in 2001, with Gov. Don Siegelman signing legislation for this accomplishment.

April Lunch & Learn (Continued) By: Charlotte Hall



If you were unable to attend this presentation, I can only tell you that you truly missed a treat. There were over 65 people in attendance and those people enjoyed seeing the phenomenal slides that Shirley made herself.

In addition to the slides, Shirley had samples of the following plants – *Rhododendron candelus* (azalea), Alabama croton – *croton alabamensis*, *Clematis virona*, *Sarracenia alata* – winged pitcher plant, *Hexastylis speciosa* leaf and bloom, *Amsonia ciliata*, and Oakleaf hydrangea *H. quercifolium*.

I know you are impressed with these correct botanical names, but trust me, they are only here because Shirley gave me her labels at the end of the presentation!



Shirley Fifield, Presenter of the Alabama Wildflowers Lunch and Learn Program and Regional Extension Agent Mallory

Please join us on May 8th, the second Tuesday in May, at noon to enjoy a presentation by Debbie Boutelier on Herbal Teas. You never know exactly what you are going to see and hear, but you can know that it will be informative and entertaining. Remember that drinks will be furnished. See you then.



Governor's Mansion Report

April 2018

By: Amanda Borden



During April, volunteers at the Governor's Mansion worked in the Herb Garden and weeded across the front of the mansion. They weeded and trimmed in front of Hill House and did some much needed renewal pruning in the back yard.



: Dian Owens and Melanie Barry trim hydrangeas in the front yard of Hill House.

SPOTLIGHT ON VOLUNTEERS

April 2018

By: Judy May



Projects Committee members who worked at Lanark April 4 were Sherri Schaefer, Judy May, Cathy Whigham, Rhona Watson, Candy Jones, Connie Willis, Terry Chambliss and intern Joan Clark. Also working that day was Carla McCune.

Attending the Projects Committee meeting Tuesday April 4 were Terry Chambliss, Jane Mobley, Janet Lewis, Johan Beumer, Rhona Watson, Sandy Rosamond, Candy Jones, Judy May and Mallory Kelley.

Members who brought refreshments to the monthly meeting were Mary Ann Hatcher, Carolyn Placeway, Robin Snyder, Becky Brown, Virginia Pruitt, Bonnie McCormick, Linda Mincey, Sheila Pearson and Charlotte Hall.

Following the meeting the following members of the Plant Sale Committee stayed for an additional planning meeting: Sherri Schaefer, Bill Quailes, Rhona Watson, Charlotte Hall, Nancy Tribble, Carol Rattan, Linda Mincey, Gale Wheeler-Leonard, Judy May, John Butler, Johann Beumer and Candy Jones.

Working the CAMGA table for Plants and Pollinators Day at Lanark were Terry Chambliss, Robin Snyder, Virginia Pruitt, Pat Petro-Perryman, Janet Lewis, Connie Willis, Jane Mobley and Sandy Rosamond.

Jane Mobley spoke at AUM on April 18 on Landscaping with Color.

Working The Plant Swap at Earth Day were Rhona Watson, Sandy Rosamond, Candy Jones, Judy May, Terry Chambliss, Sherri Schaefer, John Barnes, Nancy Tribble, and Jane Mobley.

Volunteers for the Helpline this month were : Linda Jarzyniecki, Ricky Hatcher, Andy Hayes, Ezell Grayson, Betty Plaster, Dee Turberville, Joan Clark, Sheila Radford, Cindy Beumer, Mary Ann Klatt and Mary Ann Hatcher.

Maria says she appreciates all the hard work volunteers did for her this month helping her get ready for three weddings and The Plants and Pollinators event. Working this month were Carla McCune, Don Hoover, Judy May, Norman Turnipseed, Candy Jones, Leslie Bingham, Sandra Gilley, Peggy Gelpi, Rhona Watson, Sheila Pearson, Connie Willis, Cecelia Ball, Sue Brasel, Cheryl Fitzgerald, Sharon Kochik, Betty Plaster and Dee Turberville. Our Plants and Pollinators event was very successful! We made great money for the gardens and all the vendors did well. The speakers were great and the weather was wonderful! Thanks so much to all who helped; we can't do it without your hard work and dedication. Volunteering the day of Plants and Pollinators event were Leslie Bingham, Sandra Gilley, Sue Brasel, Don Hoover, Cheryl Fitzgerald, Marie Updike, Charlotte Hall, Sheila Pearson, Linda Queen, Sherry Schaefer, Mary Ann and Ricky Hatcher, Lynda Edwards, Ernie Edwards, Betty Plaster, Connie Willis, Cathy Whigham, Peggy Gelpi, and Cecelia Ball and if I missed someone, please accept my apologies and know that you are appreciated!

Pricing Day Volunteers were Jane McCarthy, Allyson Andrews, Sherri Schaefer, Gayle Leonard – Wheeler, Melanie Eads, Cecelia Ball, Bill Quailes, Terry Chambliss, Sheila Radford, Katrina Mitchell, Marie Updike, Mary McCroan, Candy Jones, Nancy Tribble, Judy May, Rhona Watson, Lynda and Ernie Edwards, Betty Plaster, Dian Owens, and Linda Jarzyniecki.

Working Plant Sale Day were Sherri Schaefer, Linda Mincey, John Butler, Bill Quailes, Terry Chambliss, Sandy Rosamond, Jane McCarthy, Robin Snyder, Candy Jones, Carolyn Placeway, Lois Pribulick, Sharon Potts, Rhona Watson, Janet Lewis, Linda Jarzyniecki, Carolyn Hope, Linda and Ernie Edwards, Sheila Radford, Nancy Tribble, Judy May and Cecelia Ball.



Helpline Report

By: Mary Ann Hatcher

Weed identification and how to rid turf of the pest has been the frequent calls to the Helpline.

These Interns and Master Gardeners were volunteers this past month: Betty Plaster, Joan Clark, Linda Jarzyniecki, Andy Hayes, Dee Turberville, Sheila Radford, and Ricky Hatcher.

Sharon Potts served as our Appointment Reminder. Cindy Beumer, Mary Ann Klatt, and Mary Ann Hatcher served as Advisors.



Ricky Hatcher and Andy Hayes are researching answers for clients.





AHS REGION 14 SPRING MEETING

MAY 25 & 26, 2018

Hosted by the Montgomery Area Daylily Society

MEMORIAL PRESBYTERIAN CHURCH

2130 BELL ROAD

MONTGOMERY, AL 36117



SPEAKER: Karol Emmerich
Springwood Gardens Daylilies
Jordan, MN 55352

REGISTRATION FEES: \$110.00 for Adult, \$60.00 for Youth

Make checks payable to Montgomery Area Daylily Society.

Mail check and registration form to: Linda Carleton, 49 Okfuski Trail, Pike Road, AL, 36064

Email: ta99ch03@knology.net

Registration deadline is Wednesday, May 16, 2018

AGENDA

Tour of 4 Private Daylily Gardens
Lunches and Dinners
Karol Emmerich, Speaker
Awards Banquet
Door Prizes & Raffle
Workshops
Plant Auction
Plant Sales Table

Registration form can be found in the "*Dixie Daylily*" or at
http://www.ahsregion14.org/Upcoming_Meetings.html

For information: Phone: (334) 328-0164 ; Email: tigerlily5555@yahoo.com or
(334) 271-0636; Email: ladyj1771@bellsouth.net

"Daylilies: Bringing Color to the River Region"

02/13/2018

Calendar of Events

May 2018



Sun

Mon

Tue

Wed

Thu

Fri

Sat

		1	2 <i>Lanark Workday 8 a.m. to 12 noon</i>	3 <i>Work Day Elmore Co. Extension Office Learning Gardens 8 a.m.</i>	4	5
6	7 <i>Governor's Mansion Work Day 8 a.m. to 11 a.m.</i>	8 <i>Lunch & Learn 12 noon to 1 p.m. Elmore Co. Ext. Auditorium</i>	9 <i>Lanark Workday 8 a.m. to 12 noon</i>	10 <i>Work Day Elmore Co. Extension Office Learning Gardens 8 a.m.</i>	11	12
13	14 <i>Governor's Mansion Work Day 8 a.m. to 11 a.m.</i>	15 <i>CAMGA Meeting 10 a.m. to 12 noon Elmore County Extension Office</i>	16 <i>Lanark Workday 8 a.m. to 12 noon</i>	17 <i>Work Day Elmore Co. Extension Office Learning Gardens 8 a.m.</i>	18	19
20	21 <i>Governor's Mansion Work Day 8 a.m. to 11 a.m.</i>	22 <i>CAMGA Garden Tour — (more details to come)</i>	23 <i>Lanark Workday 8 a.m. to 12 noon</i>	24 <i>Work Day Elmore Co. Extension Office Learning Gardens 8 a.m.</i>	25	26
27	28 <i>Governor's Mansion Work Day 8 a.m. to 11 a.m.</i>	29	30 <i>Lanark Workday 8 a.m. to 12 noon</i>	31 <i>Work Day Elmore Co. Extension Office Learning Gardens 8 a.m.</i>		